



KUDO
廣達工業有限公司

KUDO手搖移動梯 輕鬆主宰高空工作



通過CE安全認證，全方位措施確保安全
It's CE certified, absolutely safe



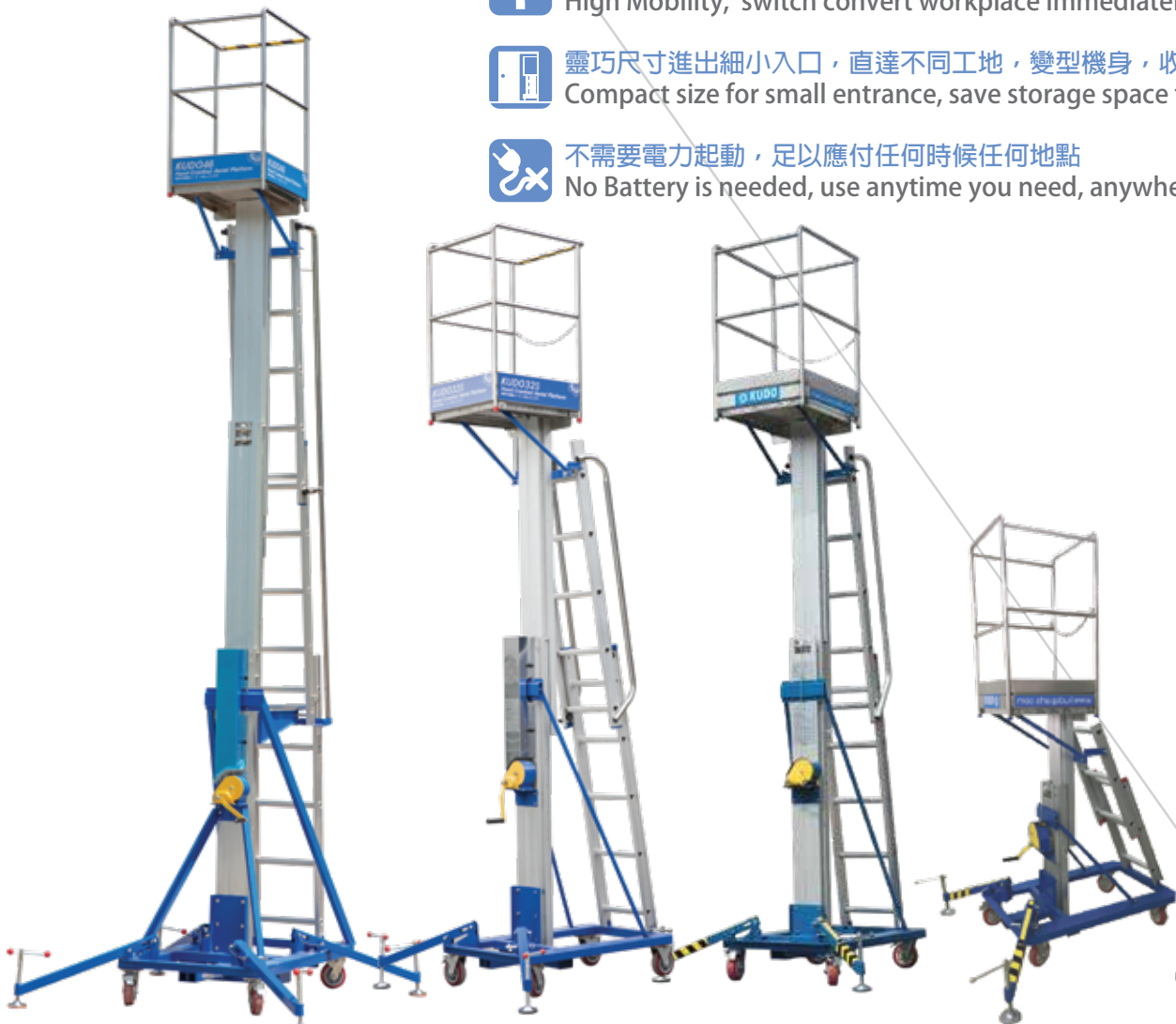
極致靈活表現，瞬間轉換工作地點
High Mobility, switch convert workplace immediately



靈巧尺寸進出細小入口，直達不同工地，變型機身，收納方便
Compact size for small entrance, save storage space too



不需要電力起動，足以應付任何時候任何地點
No Battery is needed, use anytime you need, anywhere you want



KUDO 46

KUDO 32S

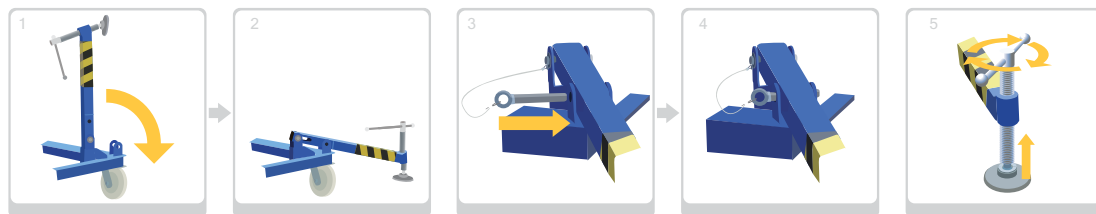
KUDO 32

KUDO 15

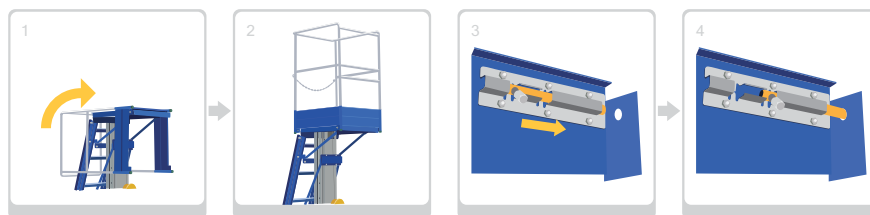


KUDO 使用說明書 User Guide

- 1** 輕輕放下支腳，用銷軸插入鎖住，並調整支撐腿
Gently put down the support legs, insert the pin to lock after adjustment



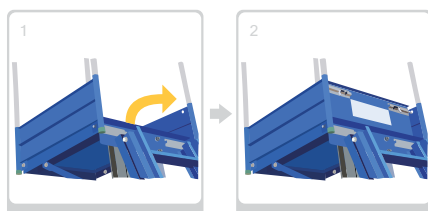
- 2** 把工作平台之安全欄立正，調整水平點，並用銷軸插入鎖住
Flips the barricades and then locked with the latch



- 3** 用手搖器把平台調整到適合的工作高度，並用保險銷插入上好安全螺絲帽
Rotate to adjust the platform to a suitable height and locked with the pin to secure in position



- 4** 操作人員站在平台後，必須將圍板翻起，插上插鎖，並把中部鏈條用鎖鉤鎖住
After approaching onto the platform, operator must flip up the barricade and insert the latch to lock, and then secure the chain with the shackle lock



型號/ Model no. KUDO46

規格/ Specification

平台最高高度/ Height: **4.57米**

淨重/ Weight: **220Kg**

最大負重/ Maximun Load: **120Kg**

機身尺寸 (摺合時)/ Dimension (Stowed): **約 1.48米 x 0.84米 x 2米**

伸開2隻腳後/ Dimension (Stabilised): **約1.8米x 1.9米**

已通過CE歐盟安全認證



KUDO

parts like wheels, batteries, etc.

KUDO is a Hong Kong based company specialized in selling equipment's like scissor lift, hand crank platform, etc., as well as spare

We offer a great variety of items procuring from all over the world. We also enjoy the advantage of product development all over China which is already a well-developed manufacturing base.

With our eagerness to offer the highest quality product with competitive prices, along with our professional consultation and customer service, we aim to become your trustful partner and supplier.

To provide one stop solution to satisfy customers' need is always our top priority mission. We work closely with our transportation companies to ensure smooth and on-time shipment. We also co-operate with testing labs and certification company in order to assure our products would meet the licensing requirement for regions all over the world, for example the European Union Directives and International.

Thank you for choosing Kudo Parts and Equipment Limited

電郵: alex@kudoparts.com

網站: www.kudoparts.com

電話: Alex Chiu (852) 95818845

香港工程實例



在香港科學館之體驗教學



一般外牆使用



各大小工地



花園道



宣道會陳瑞芝紀念中學



屯門青松小學 - 湖景邨



蓮塘 / 香園圍口岸



啓勝物業管理



九龍醫院



亞洲衛星



香港太空館



寶血會思源學校

台灣工程實例



烏日酒廠一區



烏日酒廠二區



運送前往工程公司



試機教學

型號/ Model no. KUDO32S 規格/ Specification

平台最高高度/ Height: **3.2米**

淨重/ Weight: **128Kg**

最大負重/ Maximun Load: **120Kg**

機身尺寸 (摺合時)/ Dimension (Stowed): **約1.2米x 0.75米 x2米**

伸開2隻腳後/ Dimension (Stabilised): **約1.4米x 1.48米**

已通過CE歐盟安全認證



型號/ Model no. KUDO15 規格/ Specification

工作台高度/ Height: **1-1.45米**

淨重/ Weight: **96.4Kg**

最大負重/ Maximun Load: **130Kg**

機身尺寸 (摺合時)/ Dimension (Stowed): **約1.2米x 0.75米 x1.05米**

伸開2隻腳後/ Dimension (Stabilised): **約1.45米x 1.4米**

已通過CE歐盟安全認證